



western oases - 3 day bolt on

what you see

- Bahariyya desert oases
- White Desert Oases - wind hewn rock formations
- Black Desert - A region of volcano shaped mountains with black stones on orange and brown sand
- Crystal Mountain - a ridge made up of sparkling quartz crystals
- Museum of the golden Mummies
- Temple of Alexander the Great
- Tomb of the Nobles

Minimum of two passengers, starts any day of the year.

what you get

- 1 night Bahariyya 2 star hotel accommodation (twin/double basis) including all meals
- 1 night night at a Bedouin camp in the White Desert including all meals and camping equipment. (You will need to bring a sleeping bag).
- 4x4 safari through the Oasis
- Sightseeing of the Museum of the Golden Mummies - Bahariyya, White Desert, Black Desert & Crystal Mountain
- All relevant transfer & transportation in air-conditioned vehicle
- English speaking, Egyptian tour leader.



on location

Your guide to on the ground...

visa requirements

Visas are required by all visitors to Egypt. Visa forms are available from us. The Embassy of Egypt advises all travellers to procure their visa prior to entry into Egypt. It still remains possible for nationals of some countries to procure their tourist visa upon arrival at Cairo International Airport. Visas are your responsibility. Don't forget to check!

climate

Temperatures in Egypt are generally high, particularly during the summer months from May to September, when the sun can be fierce and temperatures are at industrial levels, so take sunscreen. In Cairo, the Nile Delta and Western Desert region, winter (October to February) can be cooler - so take a jacket, long-sleeved tops and pants for the cooler evenings.

time

Egypt is 2 hours ahead of GMT (+3hrs Apr - Sept)

money

GBP1=LE8.7, USD1=LE5.5, Euro1=LE7.5, AUD1=LE5

(subject to fluctuation). Exchange facilities are available at various bureau de changes and banks in major towns have ATMs. If visiting Dahab or the oases, have a supply of cash on you as ATMs are more scarce.

health requirements

It is recommended that you be vaccinated for Tetanus and Polio, if you haven't had a booster in the last ten years. Food and waterborne diseases are more common, so we recommend vaccinations for typhoid (valid 3 years) and Hepatitis A (validity varies). Additionally, we recommend you be vaccinated for Meningitis due to recent reports that have indicated its presence in Egypt.

how much

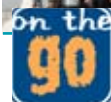
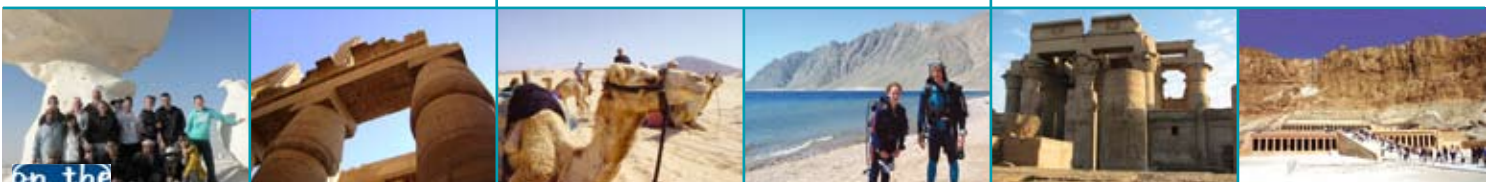
- **ENTRANCE FEES**
Entrance fees are not included in your tour. Please budget approximately **USD9-10**
- **TIPPING**
Tipping is a purely personal gesture. The decision to tip and how much is up to you but here we make a suggestion
Your guide & driver (total amount) **USD10-15**
- Mineral water (500ml or 1L) **LE5**
- Can of coke **LE2.75-5**
- Beer (local brew Stella - 500ml approx) **LE10-17**
- Meal for 2 (entree, main, local beer) **LE60-80**

things to bring

- A winter weight sleeping bag for your night in the desert.
- Lightweight cotton garments for the daytime.
- Warm clothing for the evening.
- Comfortable walking shoes for exploration.
- Toilet paper, antiseptic wipes, water bottle.
- Sunglasses, hat, sunscreen, torch, moneybelt.
- Two spare passport photos & a photocopy of your passport.
- A small daypack for your day-to-day needs.

top experiences

- Visit the spectacular pyramids in Giza - the world's oldest tourist attraction!
- Get off the beaten track and 4x4 The Sahara.
- Experience a true desert oasis. It's not like the Hollywood version.
- Lose yourself in the craziness of chaotic Cairo, Africa's biggest city!
- Camp out under a star filled sky in the hypnotic White Desert.
- Discover the Greco - Roman Golden Mummies.





western oases bolt on: itinerary

day 1 - bahariyya oasis

Cairo - Bahariyya Oasis. Today we drive to Bahariyya. Dinner and overnight - Bahariyya (hotel).

day 2 - white desert

Bahariyya Oasis - White Desert - All meals. Situated in a 2000 sq km depression about 330km south-west of Cairo is Bahariyya Oasis. This Oasis consists of several colonies of palm trees and was created many thousand years ago, long before the first Nile civilisations, when the Nile's course used to pass that way. The water now coming up from underground, in wells all over Bahariyya are leftovers from those days. A lot of money was pumped into the area in recent times when it was believed that this water was a long term resource, when it was discovered that the water supply is much more limited, these schemes were abandoned.

Dating back to ancient times, it was prosperous until the 4th century, when attacks from surrounding tribes and the decline of Roman rule left large parts of it's surrounding agricultural land to be reclaimed by the surrounding desert. There are believed to be as many as 5,000 - 10,000 mummies in the area, but only a few have been excavated so far. There are several surrounding villages and the main one is Bawiti. We explore some of Bahariyya such as the remains of a temple and settlement dating back to the 17th dynasty.

Continuing by desert 4 x 4, we drive to the Crystal Mountain - a large rock formation made from sparkling quartz and we visit the ancient Temple of Alexander the Great - the only one of it's kind in Egypt. Then we enter the enter the Tombs of the Nobles - intriguing burial chambers with some well preserved colour paintings on the walls.

Nearby, over a hundred mummies were excavated from what is now called the Valley of the Golden Mummies, many covered with

gold as the name suggests, and about 20 of these fascinating decorated specimens can now be seen in the Museum of the Golden Mummies.

Next we head to the Black Desert - to see the large volcano-shaped mountains which are covered with small black stones on a base of orangy red sand. Our next destination - the White Desert (Sahra al-Beida) is so-named as it region of striking blinding-white rock formations shaped by wind erosion. There is plenty of time to wander round the unusual formations and see what shapes you can spot - many see mushrooms, castles, towers, birds and elf men! We'll set up camp tonight under the starry expanse with a backdrop of nothing but stunning white sand and rock sculptures set across the sand, giving the landscape an eerie arctic look. Lunch, dinner & overnight - White Desert (camping).

day 3 - cairo

White desert - Cairo - breakfast. This morning you can choose to lie in or wake up early and view the sunrise - as the sun creeps above the horizon the white chalk turns into beautiful shades of pink and orange. After breakfast and some time to explore we are transferred back to Cairo and arrive in the city at approximately 5pm, where you can choose to be transferred to airport. Please do not book any flights before earliest 8pm. Additional nights accommodation is available if you require.

Note: Entrance fees, tip kitty and optional activities purchased in Egypt are payable in Egyptian Pounds (EGP) only.

exploring the western oases

Exploring the Western Desert in a great opportunity to get off the beaten track and discover parts of Egypt most traveller never venture near. In the White Desert we'll camp under a blanket of stars, while in Bahariyya, we'll be accommodated in a simple 2 star hotel. Toilet facilities en route can be primitive and the choice of available food stuffs at local restaurants and shops limited.

You will be required to bring a sleeping bag. Accommodation on this bolt-on is not luxurious by any means, we will be experiencing traditional desert life where vast open expanses are plentiful and luxuries are scarce. In the White desert we'll be 'free-camping' out in the open expanse of the desert. Please pack items useful for camping trips such as comfortable walking boots, warm clothing for the evenings (as temperatures can be low at night), toilet paper (personal supply for emergencies), antiseptic wipes, a torch, sunscreen, water bottle etc. Don't bring a suitcase!

Off road touring by its very nature can be rough and bumpy, sections of the terrain maybe corrugated or splayed with rocky outcrops and sand. The vehicles we use whilst travelling off road are typically strong and utilitarian. Common makes include 1990/2008 4 x 4 Jeep, Land Cruiser and Land Rover, modified to Troop Carrier configuration. Most vehicles are not fitted with passenger restraints and as such extra care is warranted. When travelling on sealed road for long distances touring is undertaken in 12 - 28 seat buses or 4 x 4's with lap belt passenger restraints.

*The go guide & information contained herein has been compiled with care and in good faith. It is as accurate an illustration as can be given with regard to the proposed itinerary. Circumstances beyond our control such as inclement weather or local conditions could force us to amend the proposed itinerary. This document does not form part of a contract between the client and on the go and their affiliates. Any costs shown may be subject to change but are an accurate reflection of costs at the time of writing this go guide. Please also be advised that visa requirements are subject to change and remain the responsibility of the traveller and not that of on the go.



68 north end road, west kensington, london, W14 9EP • 020 7371 1113 • info@onthegotours.com
3/690 brunswick street, new farm, brisbane, QLD, australia 4005 • 1300 855 684 • aus-info@onthegotours.com

updated March 2010